

Photo Sphere Erasmus Training

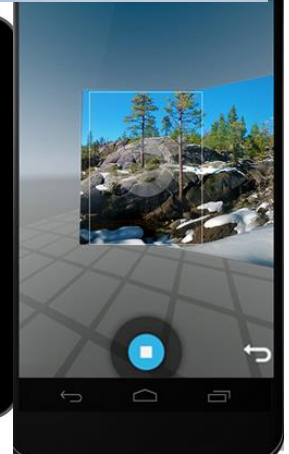
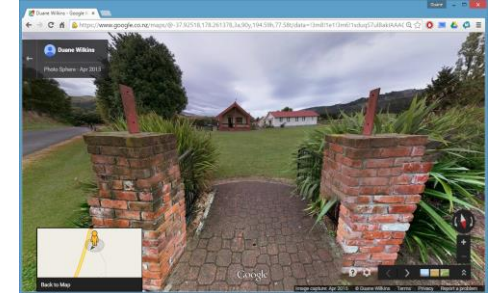
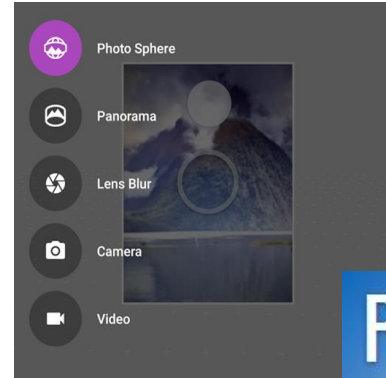




What is a PhotoSphere

- Is an 360° image.
- 3D PhotoSpheres, allows us to view up and down, all around, just like Street View.
- The photo sphere camera mode on your Android phone makes it easy to capture a series of photos and automatically turn them into a seamless 360° experience.

google.com/maps/about/contribute/photosphere/





PhotoSpheres

- Using a **360° camera** (Ricoh Theta Camera);
- Using **Google Street View App** (for IOS and Android);
- Using **Google Camera App** (for Android);
- Using a photo **camera with DSLR feature** (and a software to compose the Photosphere).

How to “take” it?

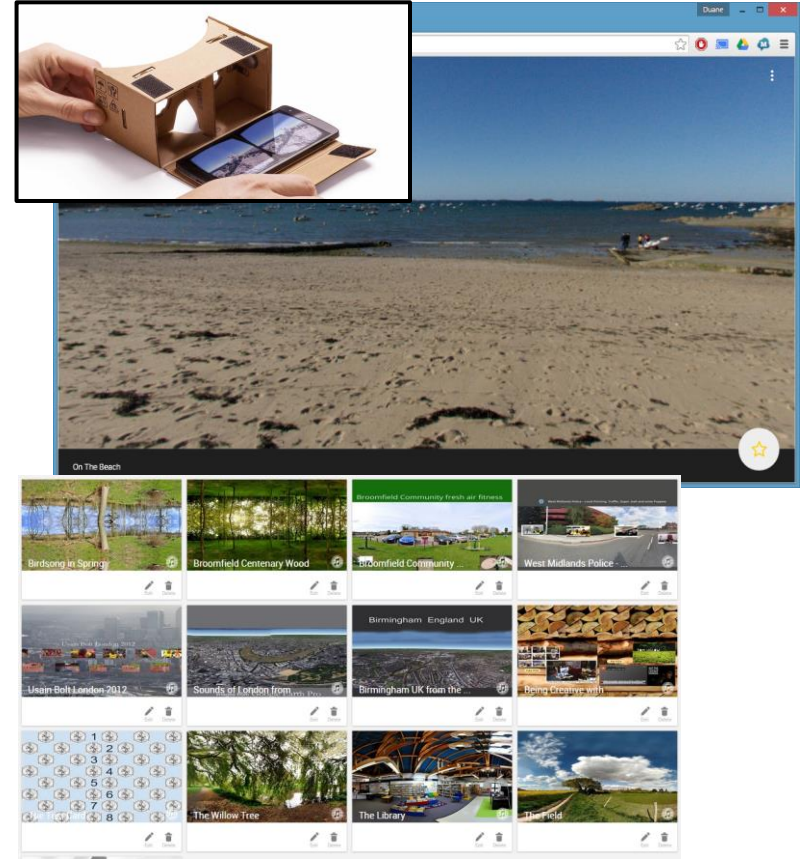




What is a StorySpheres

- Story Spheres is a way to add stories to panoramic photographs.
- First upload a PhotoSphere, a 360-degree photo to storyspheres.com.
- Then add dialogue, sound effects and even a music track.
- Whoever opens the scene will get a panoramic photo with sound and stories baked in. Better still, on a phone the photo wraps right around the viewer ... so now you can tell stories that truly revolve around your audience

storyspheres.com



[Example](#)



Biology

- In preparing an outside activity to acquire prior knowledge of the place and to know what to do during the fieldwork;
- If is impossible to carry out the fieldwork, it can be simulated it in the classroom and, here, the sounds can be associated to tasks or to document the place;

Credits: **Teresa Lacerda** (Biology and Geology Teacher and eTwinning ambassador).

Geology

- To observe areas of difficult access but useful in the study of Geology: e.g. steep slopes, unstable ground;
- To analyse riverbed of different rivers and compare them;
- To observe different kind of rocky material;
- To document geological places with some “magic”.

